

# Fansteel Superfund Site Update

Kelsey Bufford


Superfund Program Manager

Oklahoma Department of Environmental Quality





# Agenda

- Fansteel Site History
  - The Superfund Process
  - Site Tour/Photos
  - Path Forward
  - Questions
- 



# Fansteel Site History

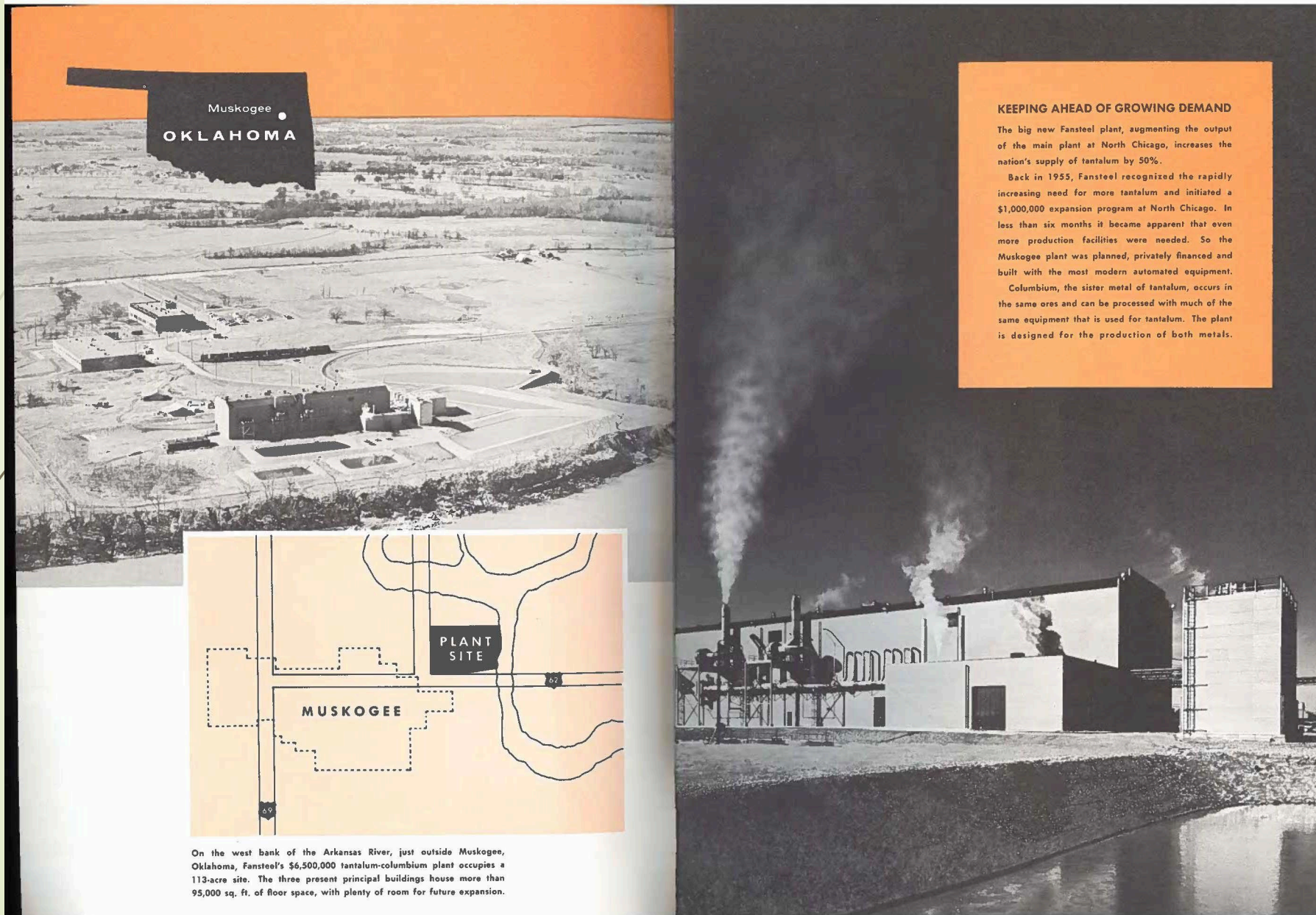
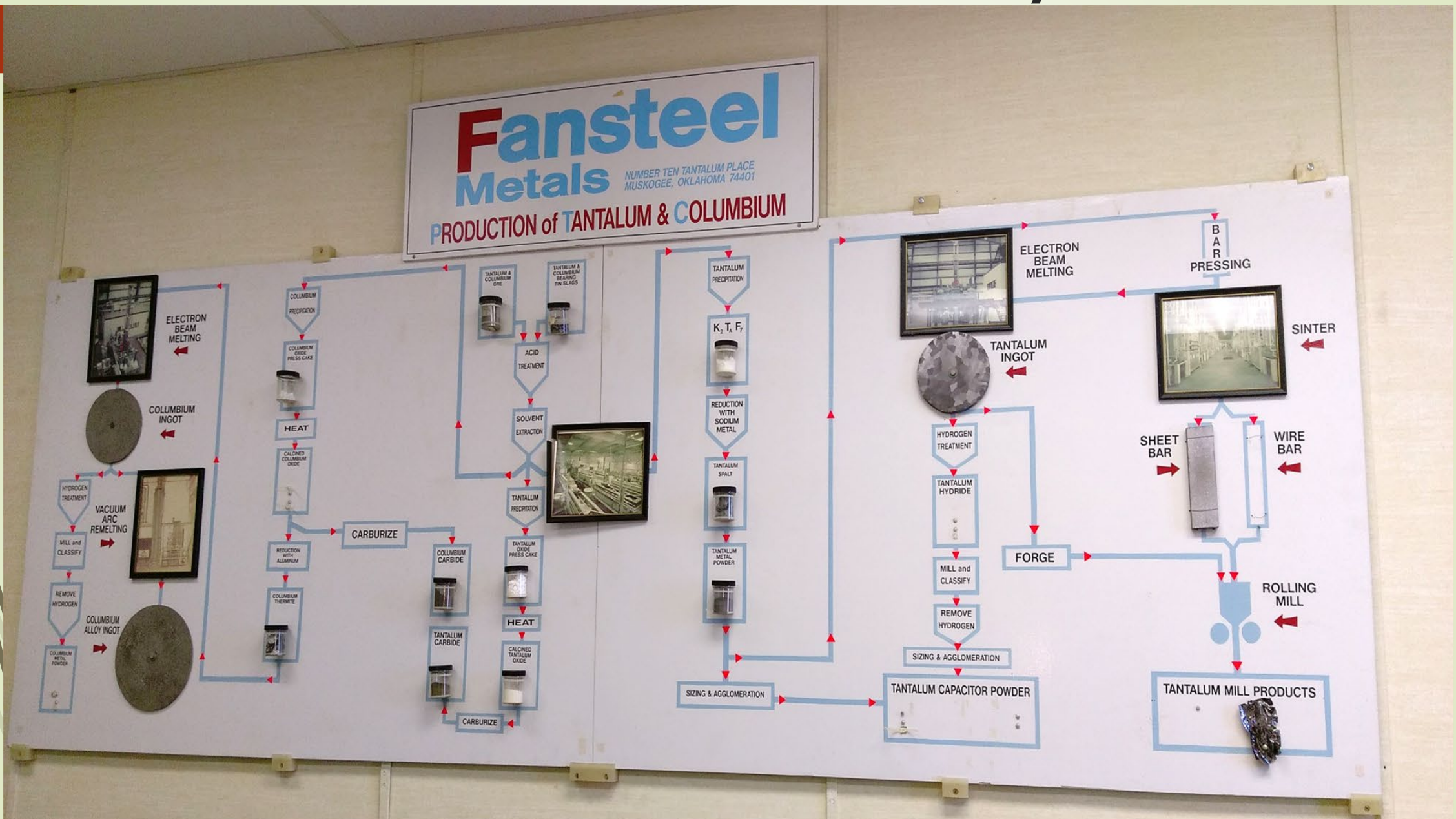


Image taken from 1958 Fansteel Brochure



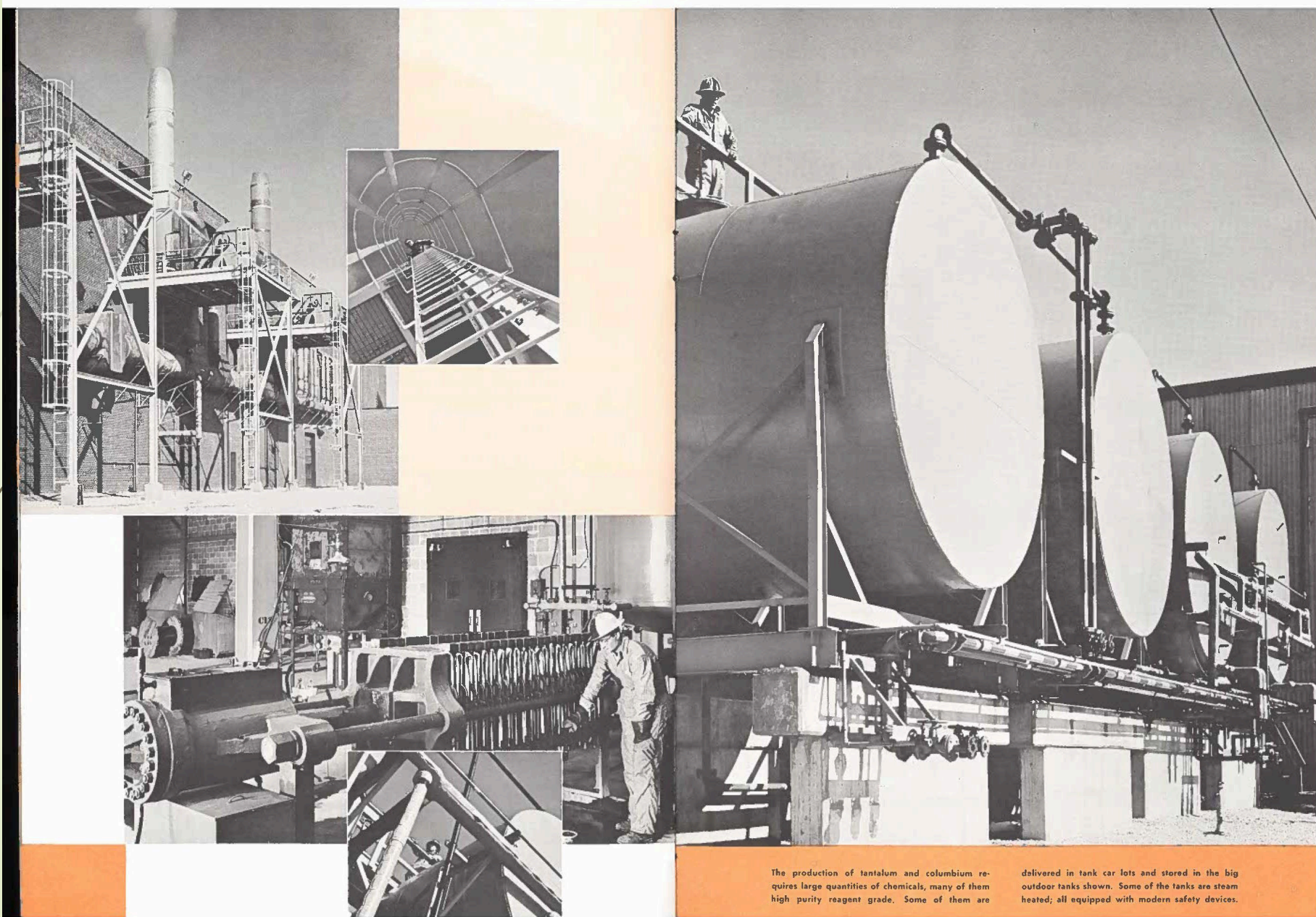
# Fansteel Site History

**Fansteel Metals**  
NUMBER TEN TANTALUM PLACE  
MUSKOGEE, OKLAHOMA 74401  
**PRODUCTION of TANTALUM & COLUMBIUM**





# Fansteel Site History



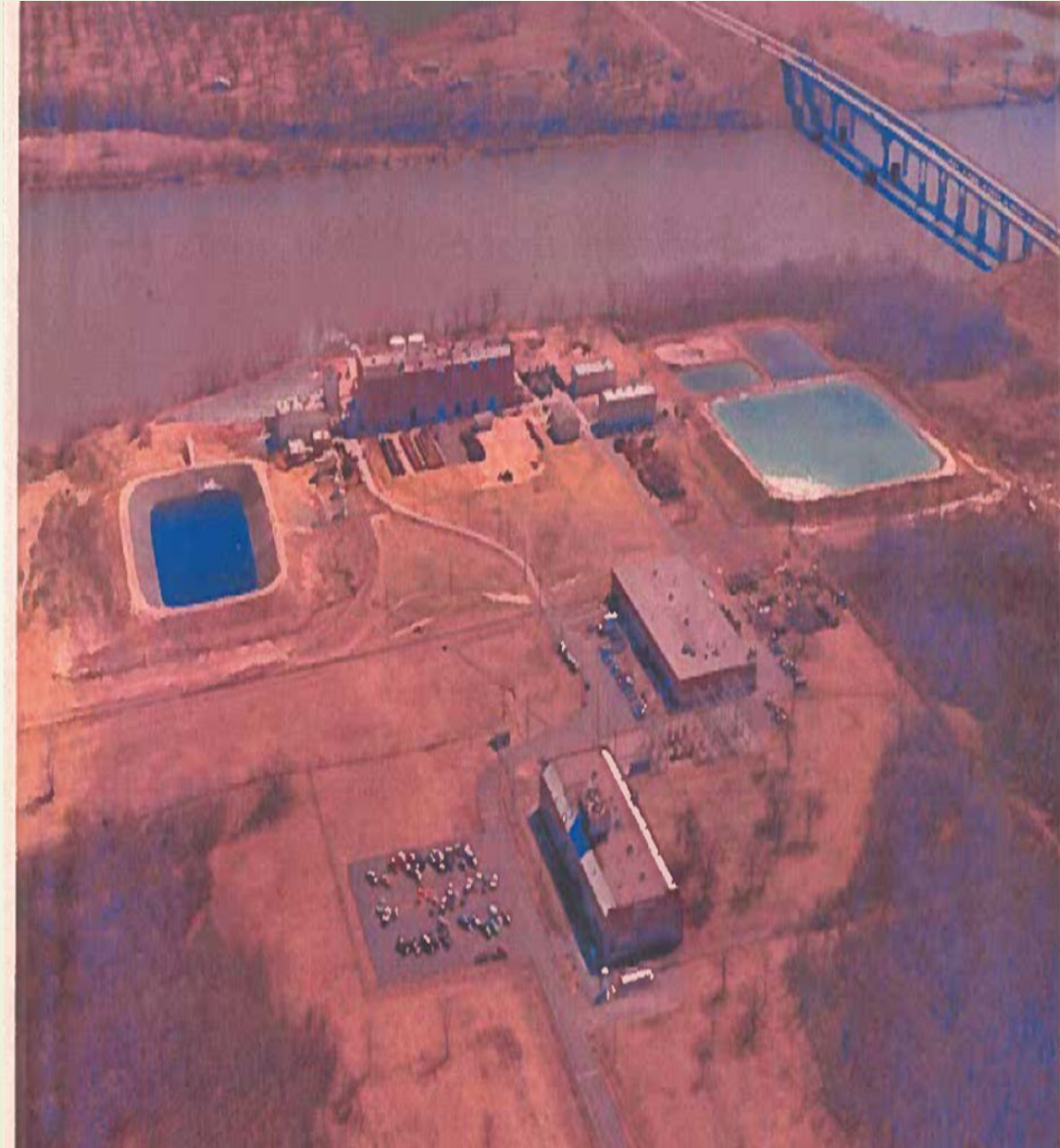
The production of tantalum and columbium requires large quantities of chemicals, many of them high purity reagent grade. Some of them are

delivered in tank car lots and stored in the big outdoor tanks shown. Some of the tanks are steam heated; all equipped with modern safety devices.

Image taken from 1958 Fansteel Brochure



# Fansteel Site History

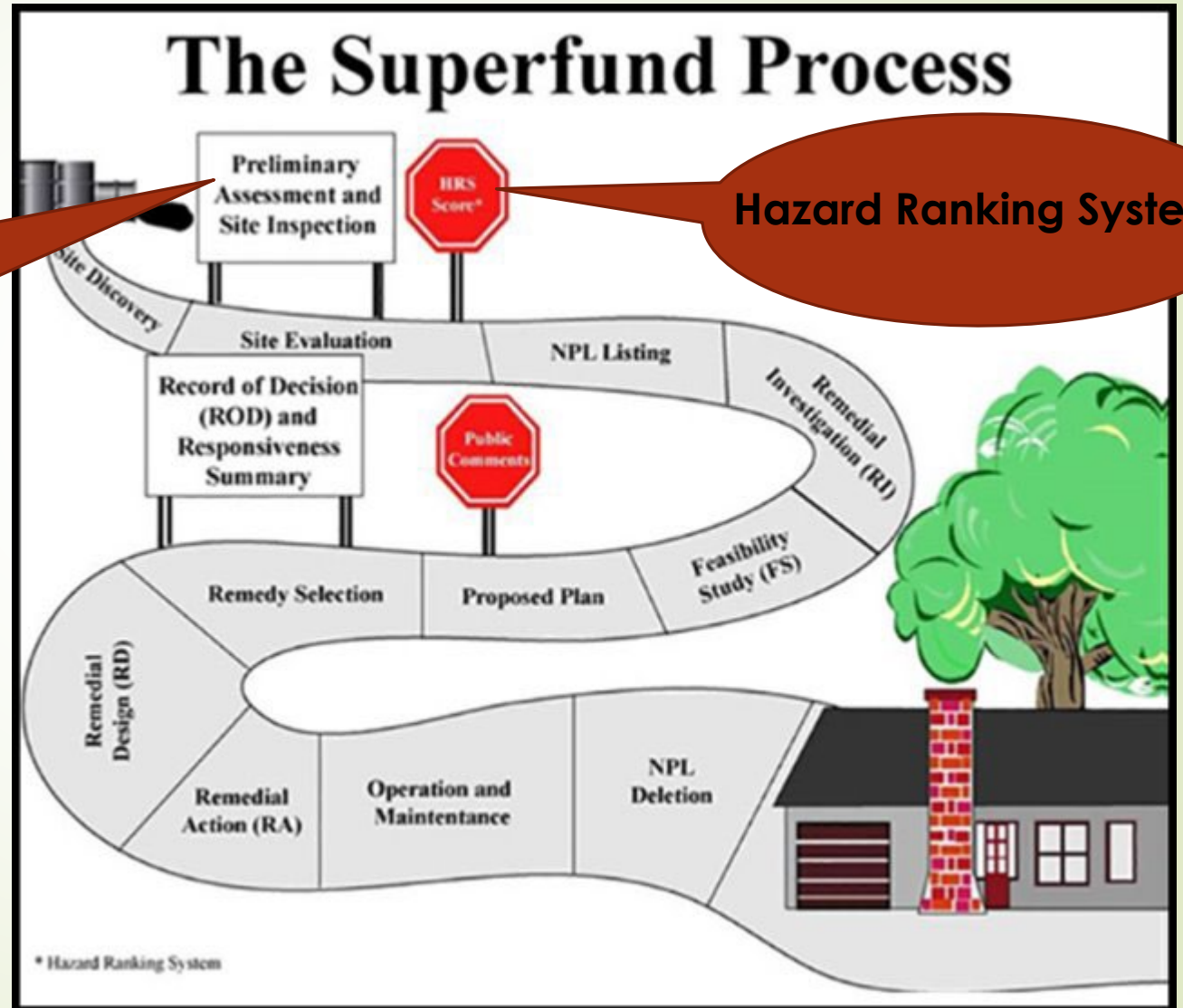


1981 aerial photo of Fansteel

# The Superfund Process

2018 – Preliminary Reassessment

2019 – Expanded Site Inspection with EPA and Weston Solutions





# The Superfund Process





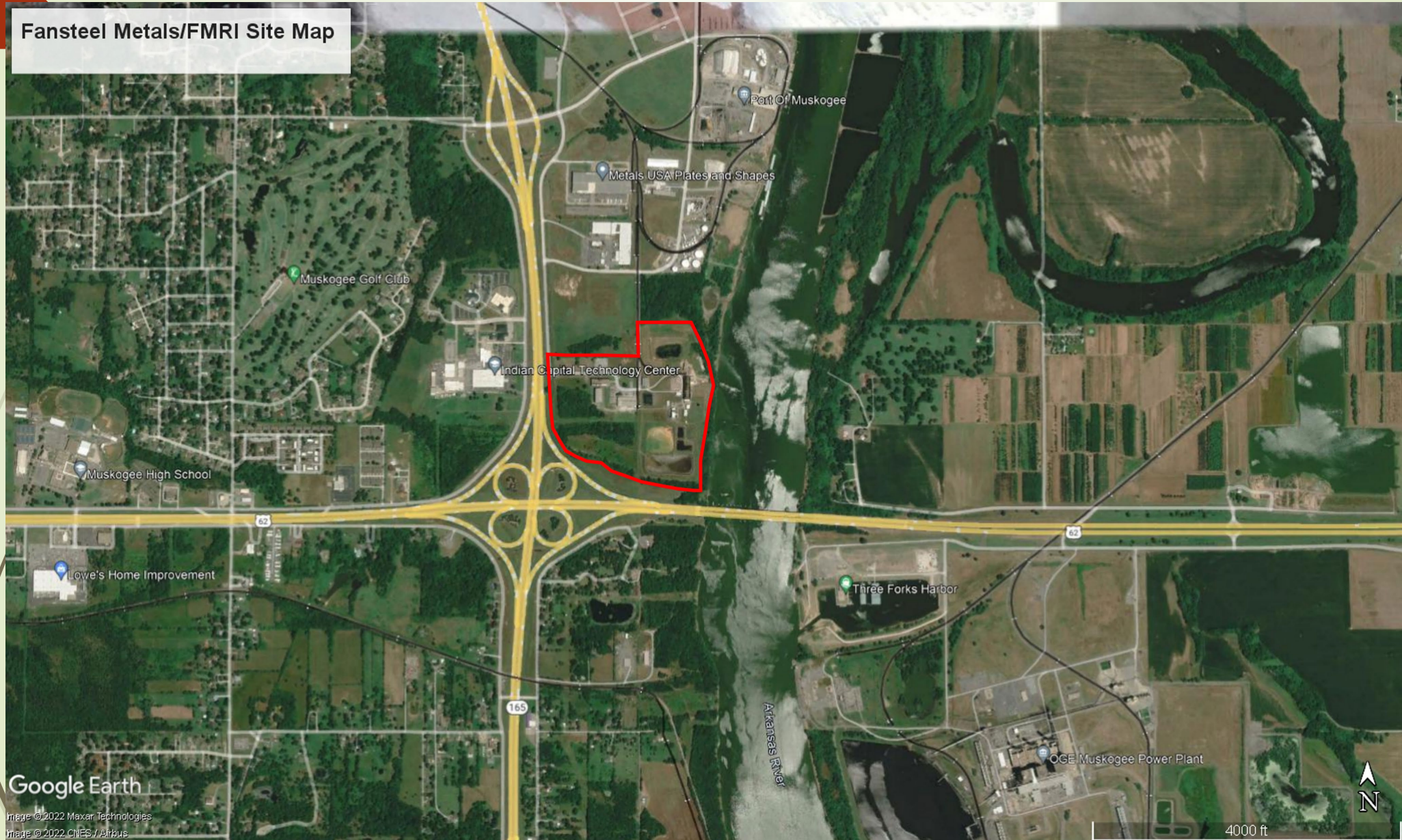
# The Superfund Process





# Site Tour/Photos

Fansteel Metals/FMRI Site Map



Google Earth

Image © 2022 Maxar Technologies  
Image © 2022 CNES / Airbus



# Site Tour/Pond 3





# Site Tour/Chem "C" Building





# Site Tour/Chem "A" Building





# Site Tour/Chem "A" Building





# Site Tour/Chem "A" Building





# Site Tour/Chem "A" Building





# Site Tour/Formal Pond 2 Trench





# Site Tour/Groundwater Treatment System



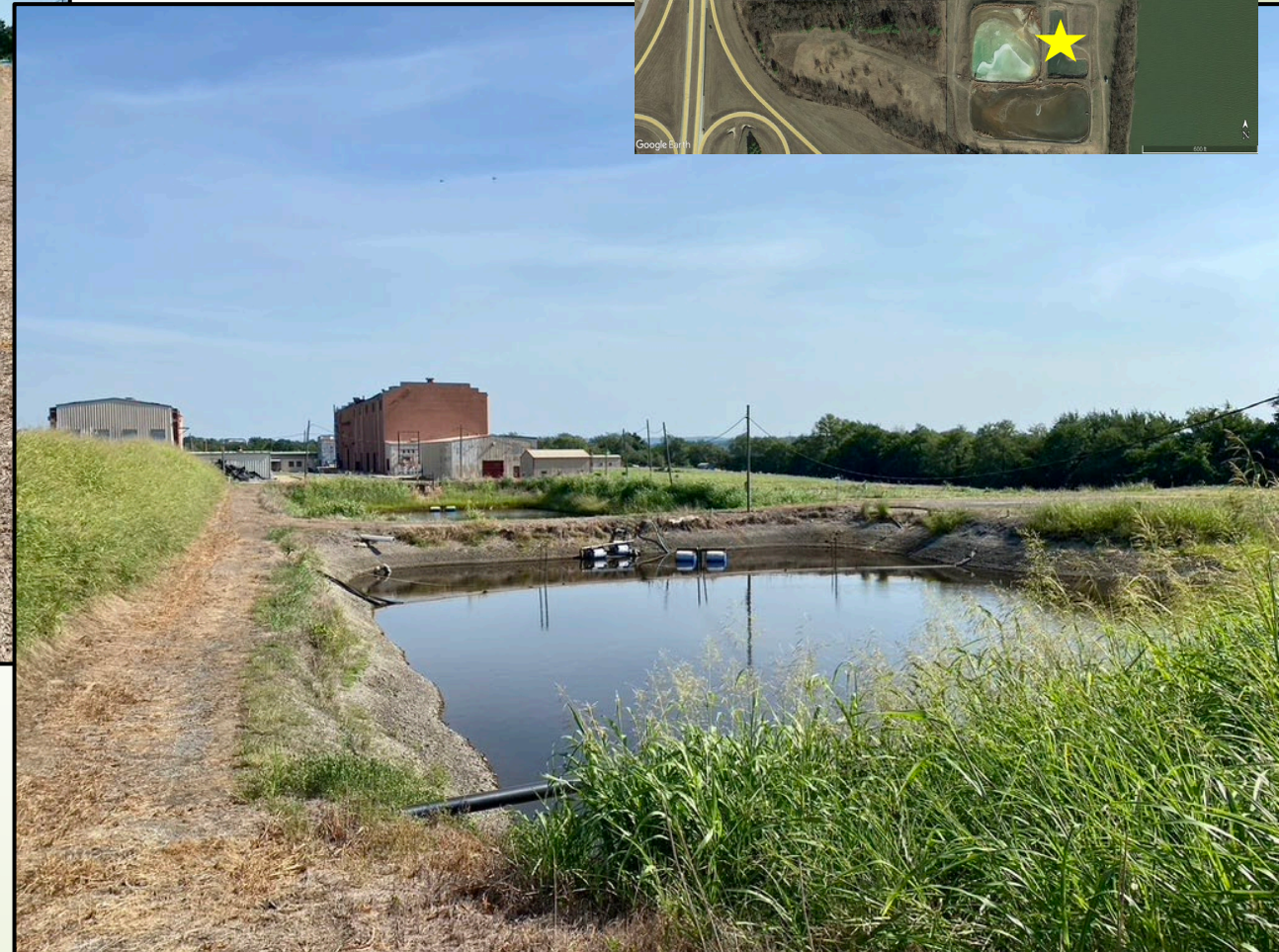


# Site Tour/Ponds 6 and 7 (Holding Ponds)



Pond 6

Pond 7





# Site Tour/Ponds 8 and 9 (Holding Ponds)



Pond 8



Pond 9





# Site Tour/Sodium Reduction Building





# Site Tour/Sodium Reduction Building





# Site Tour/Soil Stockpile





# Path Forward

- **Consistent communication between EPA, DEQ, Tribal Nations, and the community during the entire Superfund process**
- **Determining ways to keep the site secure and the groundwater treatment facility operating if it is abandoned**
- **Evaluating potential removal and disposal actions prior to site characterization and cleanup**
- **EPA enforcement is looking for responsible parties to fund cleanup**





## Contact Information:

**Makenna Hartman**  
**Makenna.Hartman@deq.ok.gov**  
**405-702-5159**

**Kelsey Bufford**  
**Kelsey.Bufford@deq.ok.gov**  
**405-702-51814**

# Questions

