

ECLS



MARK
HILDEBRAND



Local ECLS Offices

Goodwell
(580) 349-0906

Cimarron	Texas
----------	-------

Woodward
(580) 256-0641

Beaver	Harper	Woods
Ellis	Woodward	Dewey

Enid
(580) 234-0997

Alfalfa	Grant
Major	Garfield
Kingfisher	

Stillwater
(405) 372-7387

Kay
Noble
Payne
Pawnee

Bartlesville
(918) 333-2734

Osage	Washington	Nowata
Craig	Ottawa	Delaware

Grove
(918) 787-5582

Craig	Ottawa
Delaware	

West Region (405) 802-6516
South Central Region (405) 249-3645
Northeast Region (918) 605-0477
Southeast Region (580) 222-9896
Central Region (405) 702-6160

Weatherford
(580) 774-5008

Roger Mills	Custer	Blaine
Beckham	Washita	Caddo
Greer		

Oklahoma City
(405) 702-6100

Canadian	Oklahoma
Grady	Cleveland

Tecumseh
(405) 275-7967

Lincoln
Pottawatomie

Tulsa
(918) 293-1600

Creek	Tulsa	Rogers	Mayes
-------	-------	--------	-------

Hulbert
(918) 772-6440

Wagoner	Cherokee
Muskogee	Adair

Henryetta
(918) 652-0446

Okfuskee	Okmulgee
----------	----------

McAlester
(918) 423-3482

McIntosh	Haskell
Pittsburg	Latimer

Sallisaw
(918) 790-2498

Sequoyah
Le Flore

Lawton
(580) 357-9733

Harmon	Kiowa	Comanche
Jackson	Tillman	

Duncan
(580) 255-6068

Cotton	Stephens
Jefferson	

Purcell
(405) 527-8738

Ada	Seminole	Hughes
Garvin	Pontotoc	Coal
Murray	Johnston	

Ada
(580) 332-3157

Garvin	Pontotoc
Murray	Johnston

Ardmore
(580) 226-2554

Carter
Love

Durant
(580) 920-2037

Atoka	Pushmataha
Marshall	Bryan
Choctaw	McCurtain

Idabel
(580) 740-0335

McCurtain

Introduction

ECLS Numbers

Teamwork

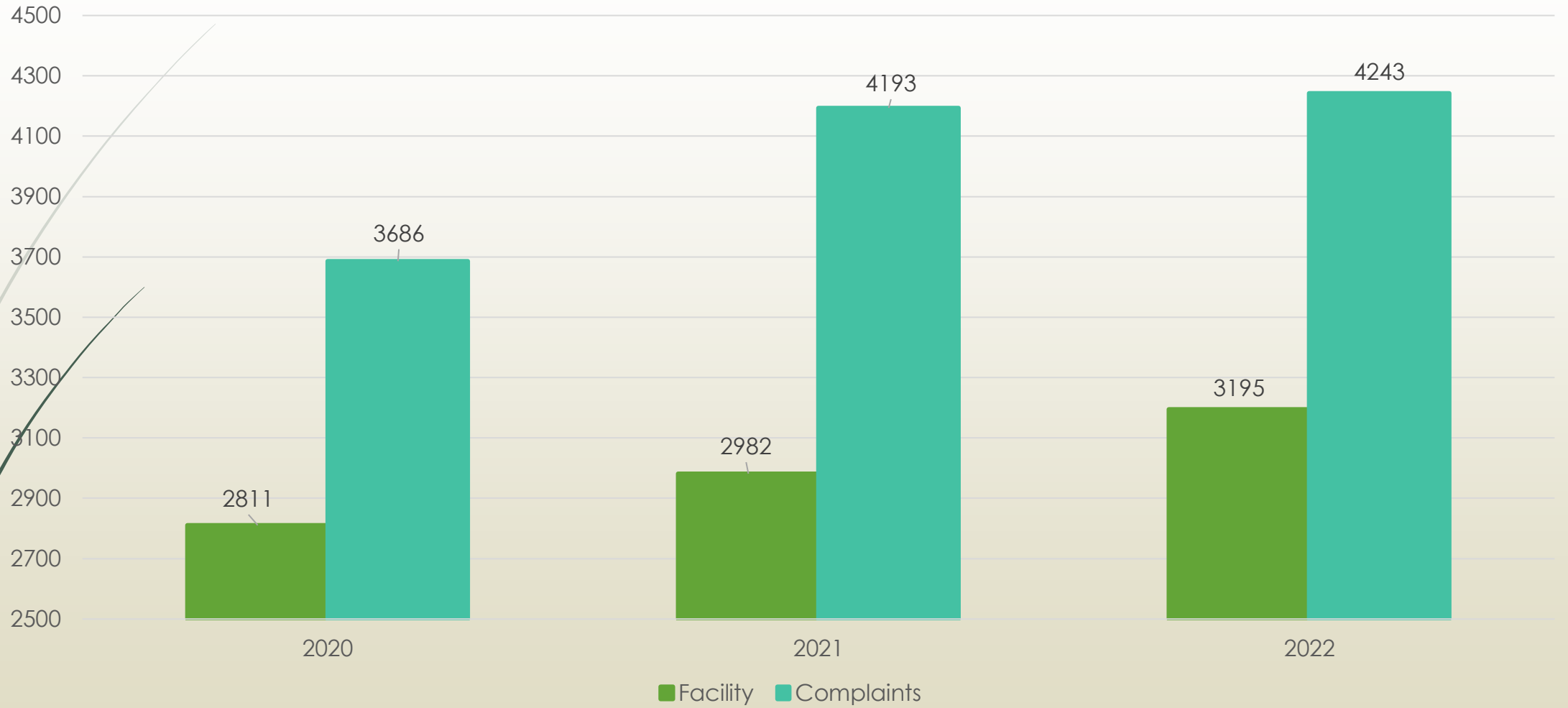
Special/Weird/New

Hiring/Vacant

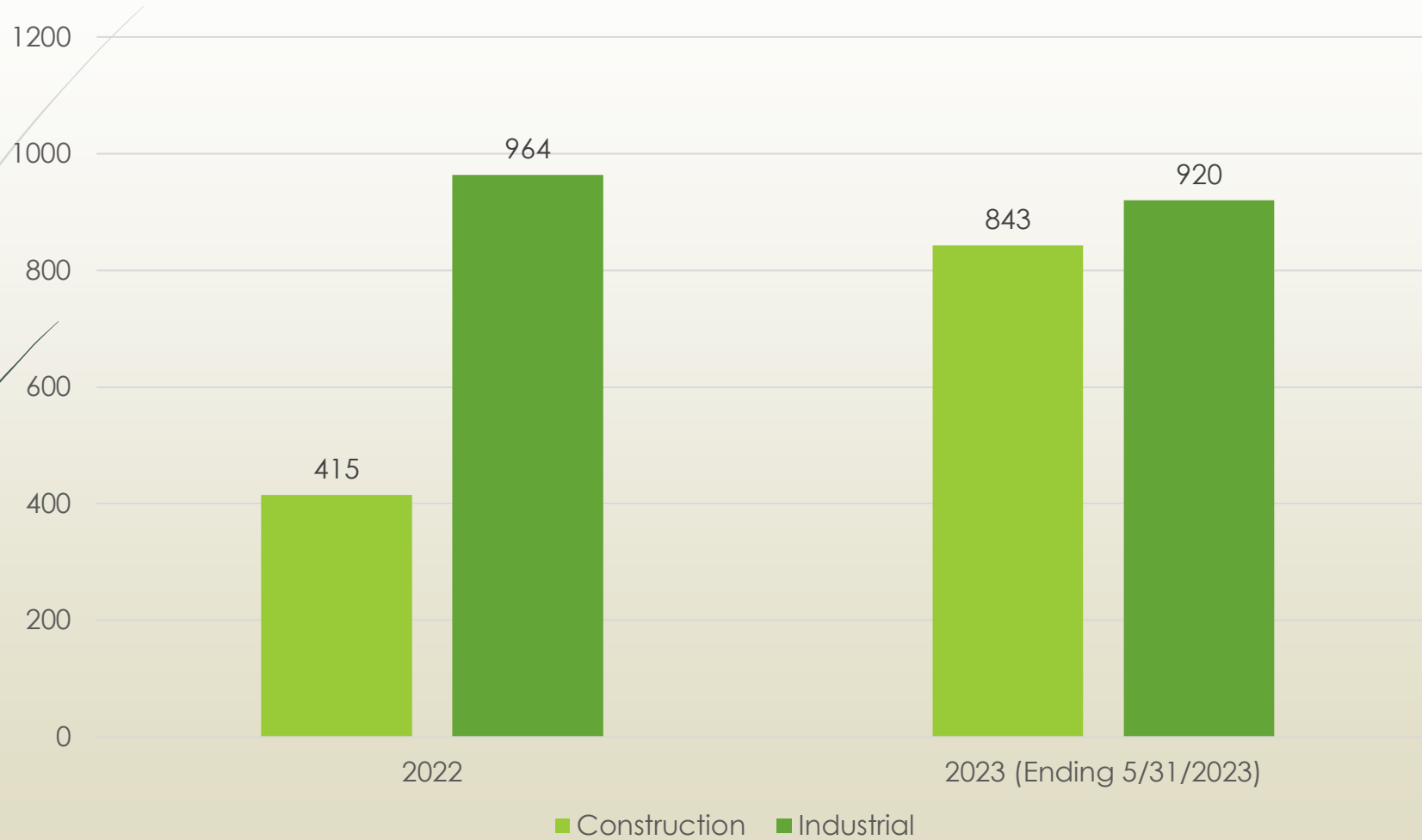
Future



Facility & Complaint Inspections



Stormwater Authorizations Issued



5



Conventional Subsurface



Aerobic Drip

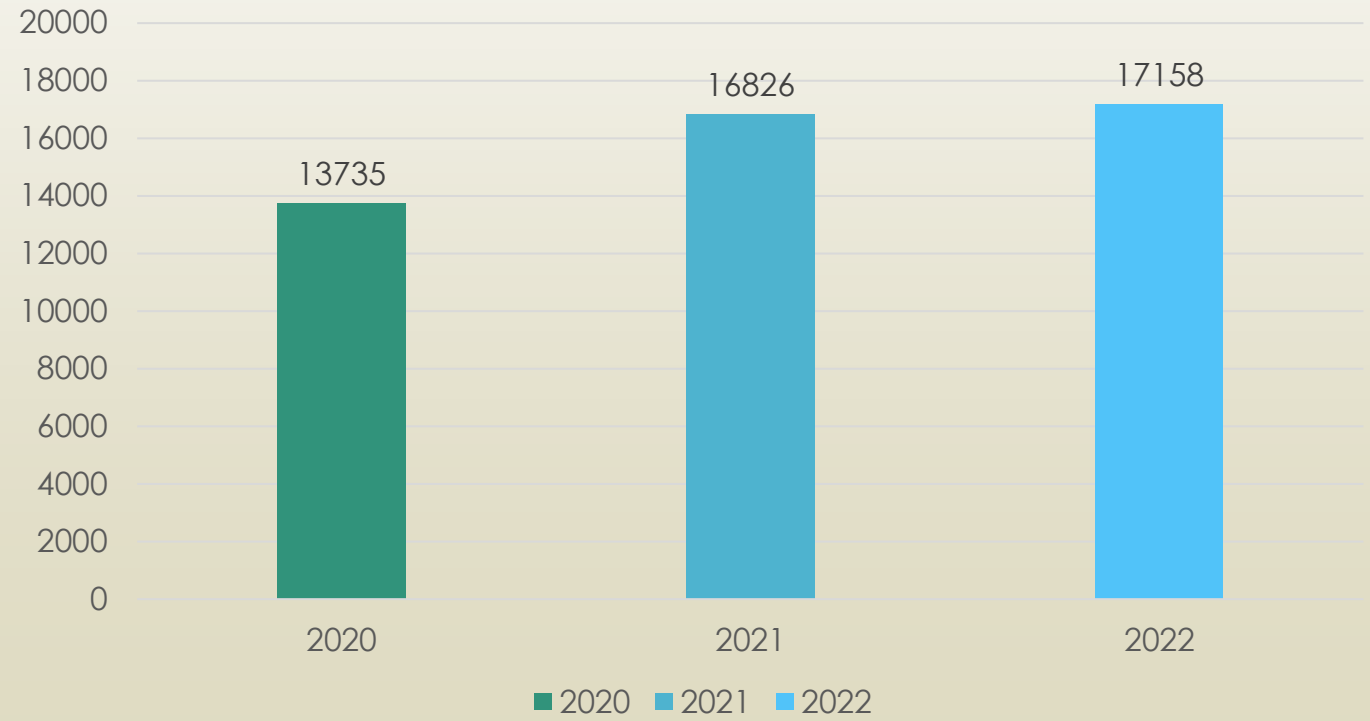


Aerobic Spray



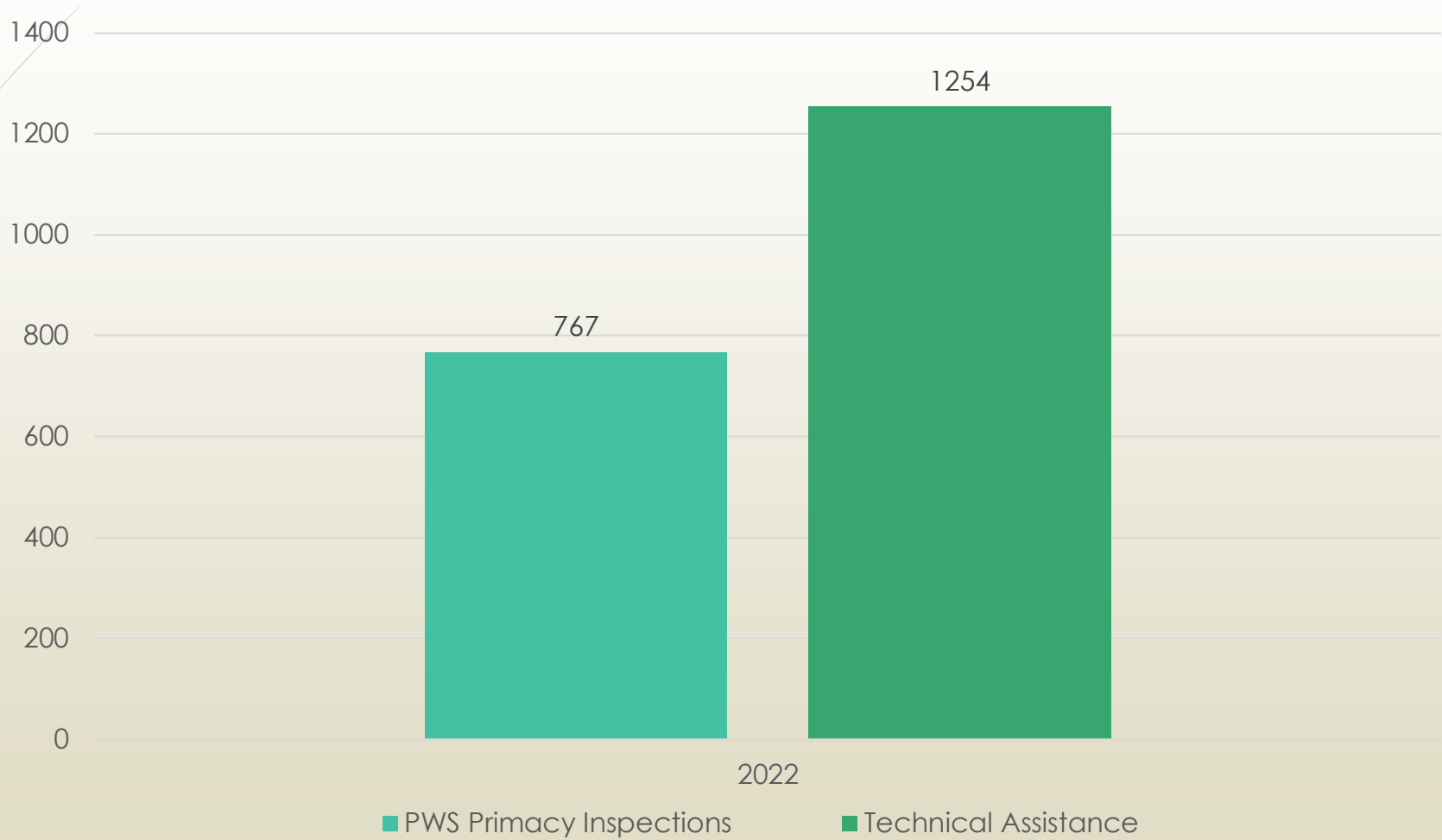
Lagoon

On-Site Services

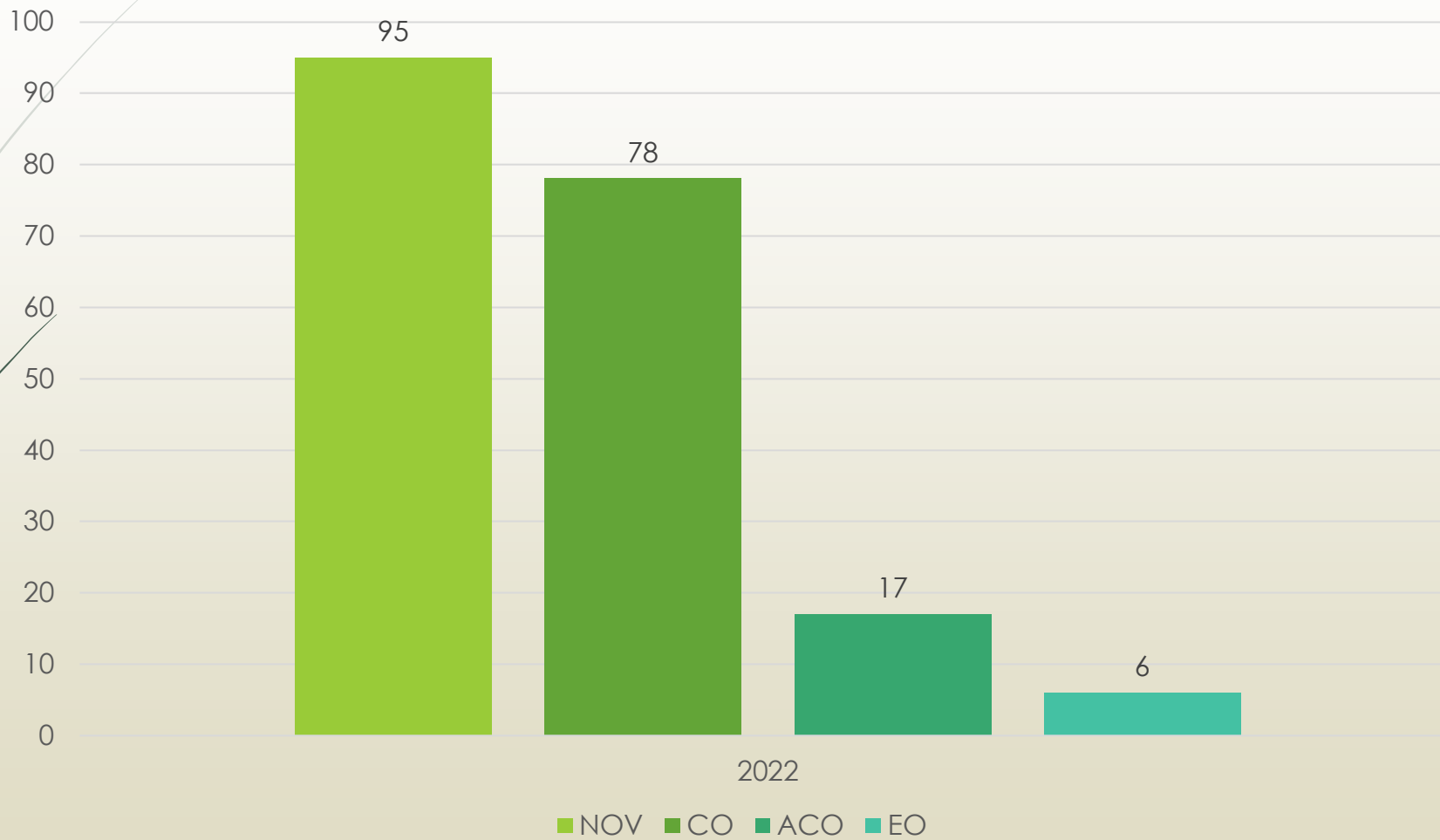


2023

Honorable Mentions



Enforcement Orders



8

Notable Emergency Orders

9

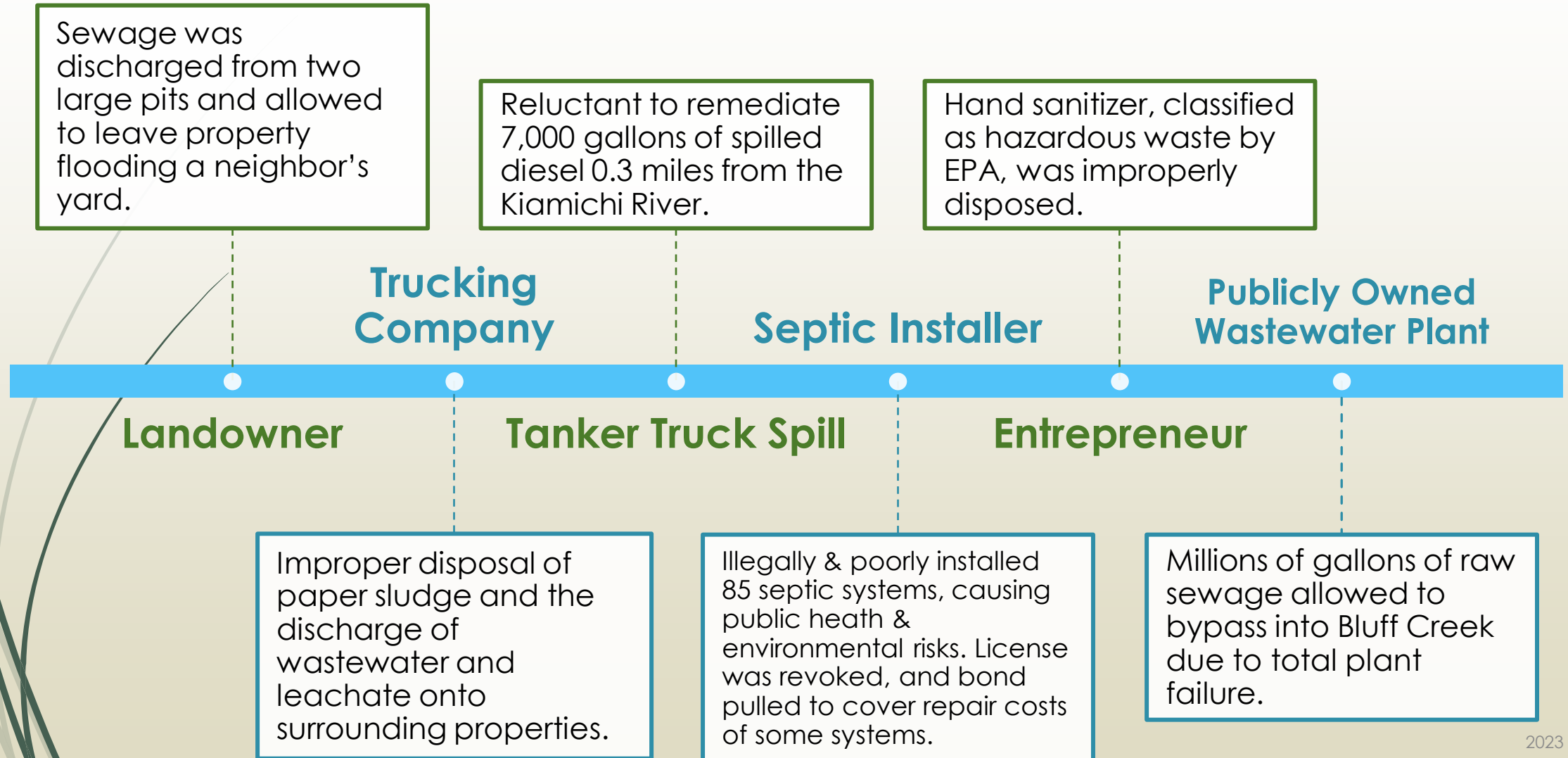




Photo Credit: Gary Henry

Teamwork

Unity Across Oklahoma

Teamwork In Action

McCurtain Co.

Catch-Up Efforts

- ▶ Employees across the state stepped up and helped process the backlog of on-site paperwork.
- ▶ Hundreds of on-site documents were processed during this time.



Continued Efforts

- ▶ Due to vacancies, remote staff still process new, incoming on-site paperwork ensuring the continued support for the regulated community in the area.

Teamwork In Action

Special Response Team

West Region

- ▶ 5-6 ESs, from 3 different offices, came together to help complete inspections.
- ▶ Weeklong stay in Enid.
- ▶ Counties visited: Garfield and Alfalfa

Southeast Region

- ▶ 5-6 ESs, from 4 different offices, came together to help complete inspections.
- ▶ Weeklong stay in Broken Bow.
- ▶ Counties visited: Choctaw and McCurtain

Teamwork In Action

Campylobacter

Community Assistance

- ESs spent countless hours assisting the local health department, CDC, and local communities investigating and ruling out possible sources of a Campylobacter outbreak, including the public water supplies.

Teamwork In Action

Cultivated Relationships

New

- Osteopathy Board
- Attorney General's Office
- OMMA
- OBN

Existing

- OOWA
- ORWA
- ODOT
- OKC
- GRDA
- QWRB
- Conservation Commission

Employees of the Month

2022

- ▶ July – Chris Gremillion
- ▶ August – Misty Johnson
- ▶ September – Kim Wirtz
- ▶ October – Desiree Smith
- ▶ November – Jenna Staerkel
- ▶ December – Jeremy Homan

2023

- ▶ January – Eve Adams
- ▶ February – Special Response Team
- ▶ March – Alex Graves
- ▶ April – Brock Barker
- ▶ May – Christen Porterfield
- ▶ June – TBD



2023

ECLS Employees of the Quarter

Photo Credit: Gary Henry



1st Qtr - Jeff Lawler



2nd Qtr - Kory Collier



4th Qtr - Kambridge Stephens

Unique Encounters

► ECLS handles strange and weird cases on a regular basis. Such as a Dermatologist who disposed of medical waste in SE Oklahoma by burying the waste. This case assisted in the licensing board's decision to revoke his medical license.

A scenic landscape photograph of a sunset over a large body of water. The sun is a bright yellow orb on the horizon, casting a shimmering golden reflection on the water's surface. The sky is filled with dramatic, dark clouds, some of which are illuminated from below by the setting sun, creating a mix of deep blues, oranges, and yellows. In the foreground on the left, a large, gnarled tree with green leaves stands on a rocky bank. The background features a dark, forested hillside under the twilight sky.

Thank you