

COREY WILLIAMS – EXECUTIVE DIRECTOR, SUSTAINABLE TULSA

EDUCATION TOWARD ACTION

Sustainable Tulsa Mission

We provide education, tools, and resources to inform and engage businesses and individuals in the three areas of sustainability: social responsibility, economic vitality, and environmental stewardship — people, profit, planet.

We are committed to the resiliency of our community, success of our business members, and ensuring a healthy planet for generations to come.

PEOPLE: Employee Engagement

PROFIT: Bottom Line Savings

PLANET: Waste Reduction

DATA REPORTING

2020-2021

1,519 Items

1,697 KPI

Key Performance
Indicators

scor3card
The triple bottom line strategy



RESULTS - PEOPLE



During the 20-21 cycle:

7,600 employees participated in members' workplace wellness programs

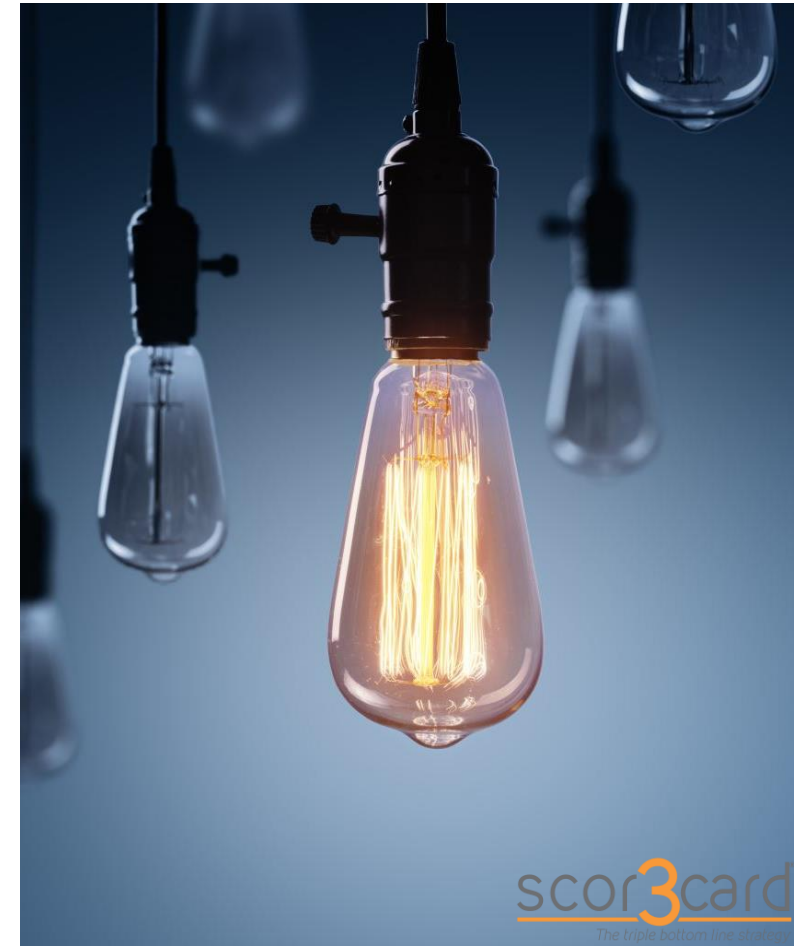
88,947 volunteer hours donated by members' employees

\$18,216,697 donated toward sponsorships and community initiatives in the past fiscal year

RESULTS - PROFIT

Through **demand-side energy efficiency programs** recommended by Scor3card, members reported annual savings of \$2,172,445.50!

Total Scor3card savings to over \$7,500,000!



RESULTS - PLANET

10,015,750 kWh

of renewable energy used by members in
the 20-21 cycle.

9,760,000 kWh

of renewable energy used by members in
the 2019-2020 cycle.



IMPACT - PLANET

- 541 acres of pollinator habitat maintained
- 10 acres of new pollinator habitat planted
- 8,807 acres of trees maintained
- 3,851 individual trees newly planted



SCOR3CARD® MEMBERS

AAON, Inc.	Hilti, Inc. – Plano	Ross Group
American Waste Control	Hilti, Inc. – Tulsa	Schlumberger - Kellyville
Association of Central	HoganTaylor LLP	Schlumberger - Bartlesville
Oklahoma Governments	ICF – Tulsa	Spirit AeroSystems
Cherokee Nation	INCOG	T.D. Williamson
Environmental Programs	Miller Environmental Transfer,	Terracon Consultants, Inc.
City of Tulsa – Water & Sewer	LLC	The Metropolitan
(Elwood Location)	Muscogee Nation	Environmental Trust
City of Tulsa – Water & Sewer	Environmental Services	Tulsa Community College
WQA Micro Lab	Oklahoma Aquarium	(4 locations)
Congregation B’nai Emunah	Oklahoma Department of	Tulsa Regional Chamber
Covanta	Environmental Quality	Tulsa Zoo
Cox	ONE Gas	Up With Trees
CP Kelco	ONEOK Inc	UScellular (8 locations)
Dewberry Architects, Inc.	Price Family Properties	
ES2	Public Service Company of	
Grogg’s Green Barn	Oklahoma	

5 states
13 cities

OUR SCOR3CARD SPONSORS



WHAT IS SCOR3CARD®



Online Tool



Coaches



Acknowledgement



Workshops

SCOR3CARD® CATEGORIES

Communication & Promotions

Community Resilience

Healthy Work Environment

Material Management

Transportation

Energy

Water



**53 Directives and
88 Key Performance Indicators (KPI)**



SCOR3CARD® CORNERSTONES

Communication &
Promotion

Benchmarking

Cornerstones

Healthy Work
Environment &
Community Resilience

Material Management

GETTING STARTED

- Coach to help
- Cornerstones as a guide
- Resource links for each item
- Milestones
- Work Days



NEXT STEPS

- KPIs
- Reports
- Goal Setting
- GRI Tracking
- SDG Tracking

UPDATES TO SCOR3CARD®

- New monthly milestones for regular engagement
- New coach training
- New materials for teams to facilitate internal teambuilding
- Goal setting template
- New KPIs
- Item refinements
- Textual clarifications
- Change EII from “Carbon Offsets” to “Carbon Reductions”
- Improving engagement around Scor3card Work Days



Improve top &
bottom line



Boost employee
productivity &
retention

Increase efficiency
& waste reduction

Simplify & organize
corporate
responsibility
initiatives

Transparency with
stakeholders

Greater
competitive
advantage

Stronger risk
management

Improve brand
reputation

FEEDBACK ABOUT SCOR3CARD®



SUSTAINABLE TULSA PROGRAMS

MONARCH EDUCATION



Monarch Initiative of Tulsa

To provide information promoting the creation of habitats to increase the monarch population during migration through the Tulsa area.

Partnership between 8 organizations

Encourages the conservation of outdoor spaces

Offers education to help pollinators

Promotes events in the Tulsa area



1ST THURSDAY



1st Thursday! is Sustainable Tulsa's monthly free and open-to-the-public meeting offering individuals an opportunity to network, enjoy lunch, and hear presentations from local, regional and national sustainability leaders.

Online

Free and open to the public

Average of 90 attendants each month

Networking opportunity

November 4th The Evolving Electricity Sector



B2B CASE FOR SUSTAINABILITY



Sustainable Tulsa's brings together businesses to learn from each other about the benefits of sustainability to the bottom line through our B2B Case for Sustainability series.

Varied topics addressing businesses' role in sustainability

Average of 70 attendants per quarter

Networking opportunities

November 18th | Bellmon Award Winners



VERIFICATION PROCESS

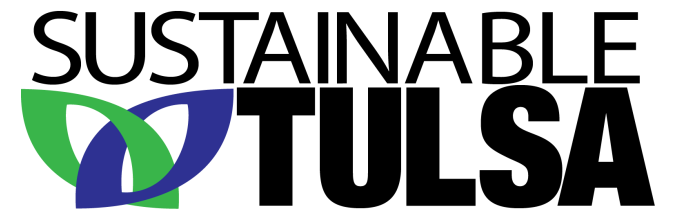
At the end of each Scor3card cycle, responses are collected and reviewed by independent verifiers.



THE BELLMON AWARDS



The triple bottom line strategy



THANK YOU!

COREY WREN WILLIAMS – EXECUTIVE DIRECTOR

COREY@SUSTAINABLETULSAINC.ORG

918-808-6576

THERESA KERRIGAN – SCOR3CARD MANAGER

THERESA@SUSTAINABLETULSAINC.ORG

918-417-2196